



INDOFINE Chemical Company, Inc.

121 Stryker Lane, Bldg. 30, Suite 1 • Hillsborough, NJ 08844 • U.S.A.

Phone: (908) 359-6778 • FAX: (908) 359-1179

website: www.indofinechemical.com

e-mail: chemical@indofinechemical.com

CERTIFICATE OF ANALYSIS

Catalog Number: 22-419

Product Name: **4-METHYL-2,6-DIMETHOXYPHENOL**

CAS Number: [6638-05-7]

Lot Number: 2303778

Chemical Formula: C₉H₁₂O₃

Molecular Weight: 168.19

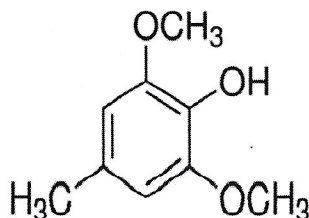
Appearance: Colorless to pale brown low melting solid

Melting Point: 34.2-36°C

Solubility: Clear solution in ethyl acetate

Storage: Store in a cool, dry place

Purity(GC): 98.32%



Prepared by:
Ramesh Mandadi
Ramesh Mandadi
Director of Operations

Reviewed and Approved by:
Sujata Moton
Sujata Moton
VP

ICG **INDOFINE Chemical Company, Inc.**

121 Stryker Lane, Bldg. 30, Suite 1 • Hillsborough, NJ 08844 • U.S.A.

Phone: (908) 359-6778 • FAX: (908) 359-1179

website: www.indofinechemical.com

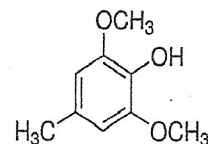
e-mail: chemical@indofinechemical.com

GC ANALYSIS

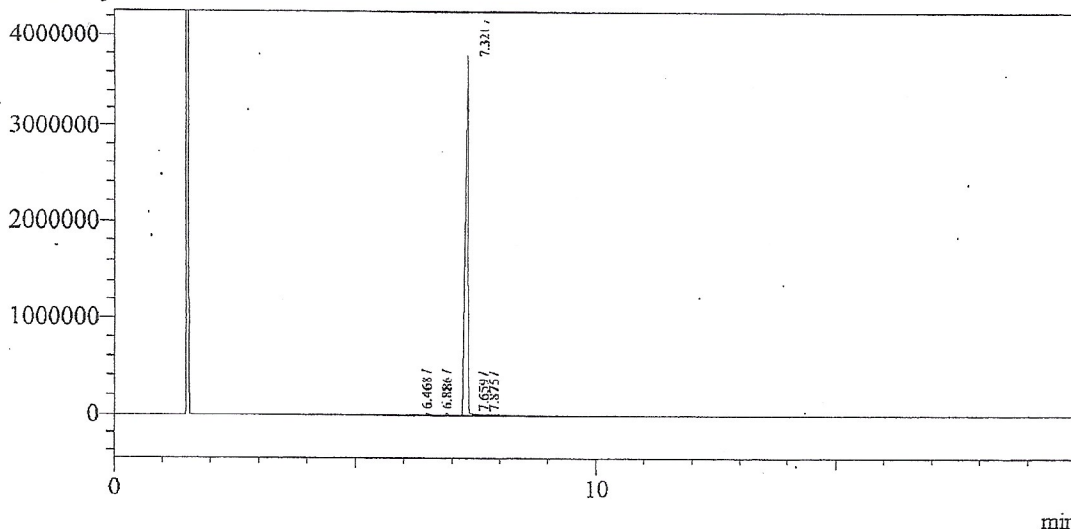
User Name : Sanjeev
Vial# : 10
Sample Name : 2,6-Dimethoxy-4-methyl phenol
Sample ID :
Injection Volume : 1.0 ul

Catalog No.: 22-419
Product Name: 4-Methyl-2,6-dimethoxyphenol
Lot No.: 2303778

Description:
Column:RTx-5 # 30Mts x 0.25mm x 0.25um
Diluent:Methanol



Chromatogram 2,6-Dimethoxy-4-methyl phenol D:\GC-03\Data
Intensity



Peak Table - Channel 1

Peak#	Ret.Time	Area	Area%	Name
1	6.468	87890	0.574	
2	6.886	54728	0.357	
3	7.321	15055569	98.315	
4	7.659	80153	0.523	
5	7.875	35261	0.230	
Total		15313601	100.000	

Prepared by:
Ramesh Mandadi
Ramesh Mandadi
Director of Operations

Reviewed and Approved by:
Sujata Moton
Sujata Moton
VP